

ABT[®]



ABT Engine Control

Usermanual AEC Software

ABT[®]



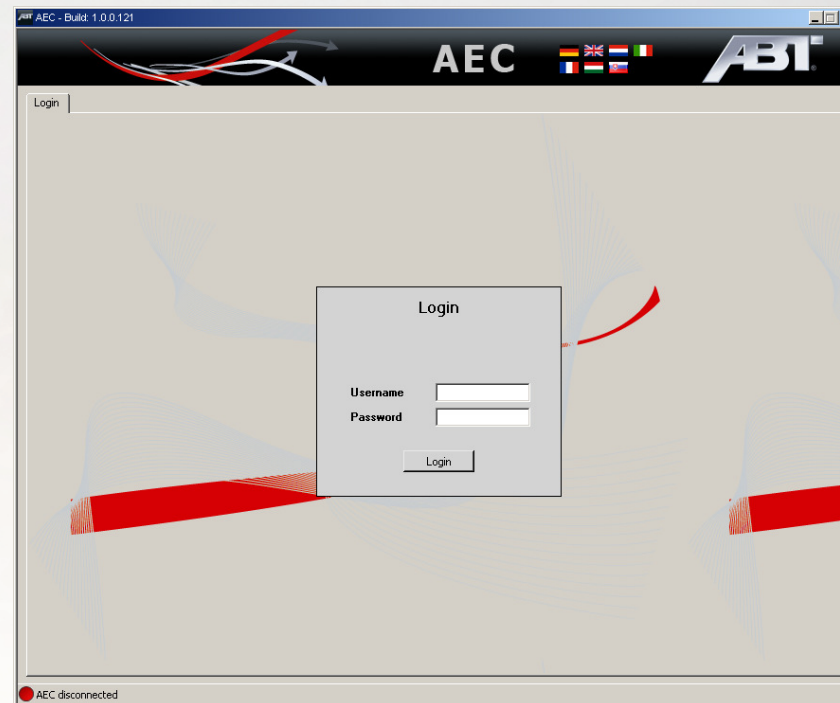
Headquarter

ABT Engine Control programming



- **Link to download the software:**
www.abt-sportslines.de/aec_software/setup.exe

Open IP access:
IP 213.182.13.90
IP 213.182.13.94
Port 80



LOGIN:

Username and password are the same as in your dealer account

Connect the AEC



To connect, please take the following step:

- Connect your AEC to the ECU connector
 - Connect your AEC to the external power supply (12V)
 - Connect USB to AEC
 - Connect USB to computer
-
- If everything is correct, you should get an information about your AEC in the footer

 AEC verbunden (COM11) | Serien-Nr.: 200038 | HW-Vers.: 2.10 | VIN: WAUZZZ1K800200674 | User: f00_pvk

Dashboard



Brand	Vehicle Type	Engine size	Fuel type	Count
Audi	A4_8K	3.0	Otto	179
VW	Tiguan_5N	2.0	Diesel	56
Audi	A6_4F8	3.0	Otto	53
Audi	A5_8T	3.0	Otto	50
Audi	A5_8F_Cabrio	3.0	Otto	49
Audi	Q5_8R	2.0	Diesel	28
Audi	A7_4G8	3.0	Diesel	23
Audi	A1_8X	1.4	Otto	20

16.08.2011

The AEC-Software was updated. The following new features were added:

- Automatic detection of AEC serial number
- Automatic detection of VIN, if AEC was programmed before
- Extended and refreshed Hardware order section
- Change-AEC's can now be programmed
- Test-AEC's can now be programmed and will be automatically charged on change to a regular AEC

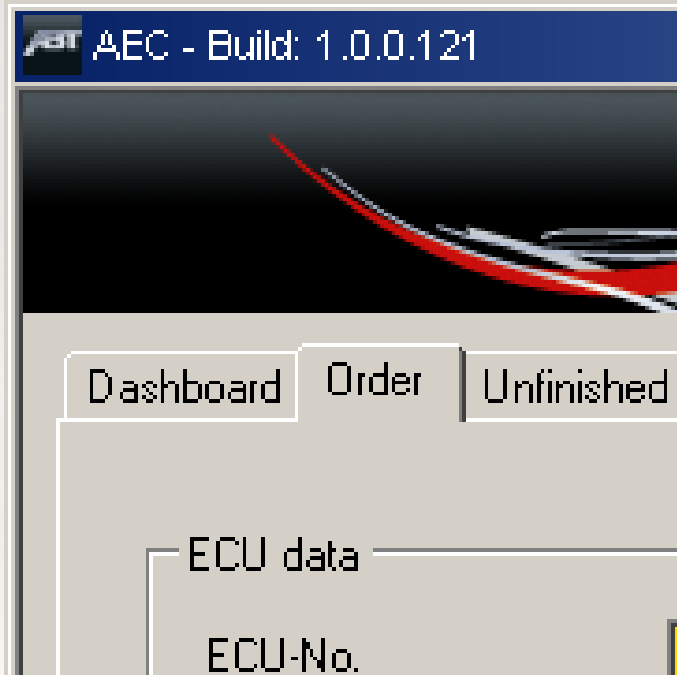
A manual about the new functions and features is in progress and will be available soon at the register "Documents".

AEC verbunden (COM2) | Serien-Nr.: 200860 | HW-Vers.: 2.12 | VIN: WWWZZZ7777777777777777 User: f87_cd

➤ Dashboard

- The dashboard will show you internal statistics about your tuned AEC cases
- News will show you actual news about AEC
- In your footer you can see if your AEC is communicating with the Software (red / green)

Bestellung



➤ Order

- Here you order your tuning-dataset
- The read out data from your AEC will be automatically filled out in your software
- All data can not be read from Software have to be filled out manually
- AEC with existing VIN number can be programmed with another dataset. The first dataset will be erased.

 AEC verbunden (COM11) | Serien-Nr.: 200038 | HW-Vers.: 2.10 | VIN: WAUZZZ1K800200674 | User: f00_pvk

Read out data from AEC

Order



ABT AEC - Build: 1.0.0.121

AEC **ABT**

Dashboard | Order | Unfinished orders | Service programming | Hardware order | Documents

ECU data

ECU-No. 03L 906 018 ET
Software 7425

Vehicle data

Gear type manual transmission
DPF
Registration date 01.01.2011
Mileage (km) 1111
Vehicle VW Tiguan_5N 2.0 Diesel CFFB 170 PS 300 km/h AE
Status available - ABT Power - AEC V2.12 - the power upgrad can be order in the export department, please notice the chassissnumber. At the moment are only cars without vehicle heater possible. Please send complete
License 5
Article-No. 5N0120170CFFB/1
AEC-Version V2.12
AEC Serial-No. 200860
VIN WVAUZZZ777777777

Bitte Faktura-Land wählen:
Deutschland

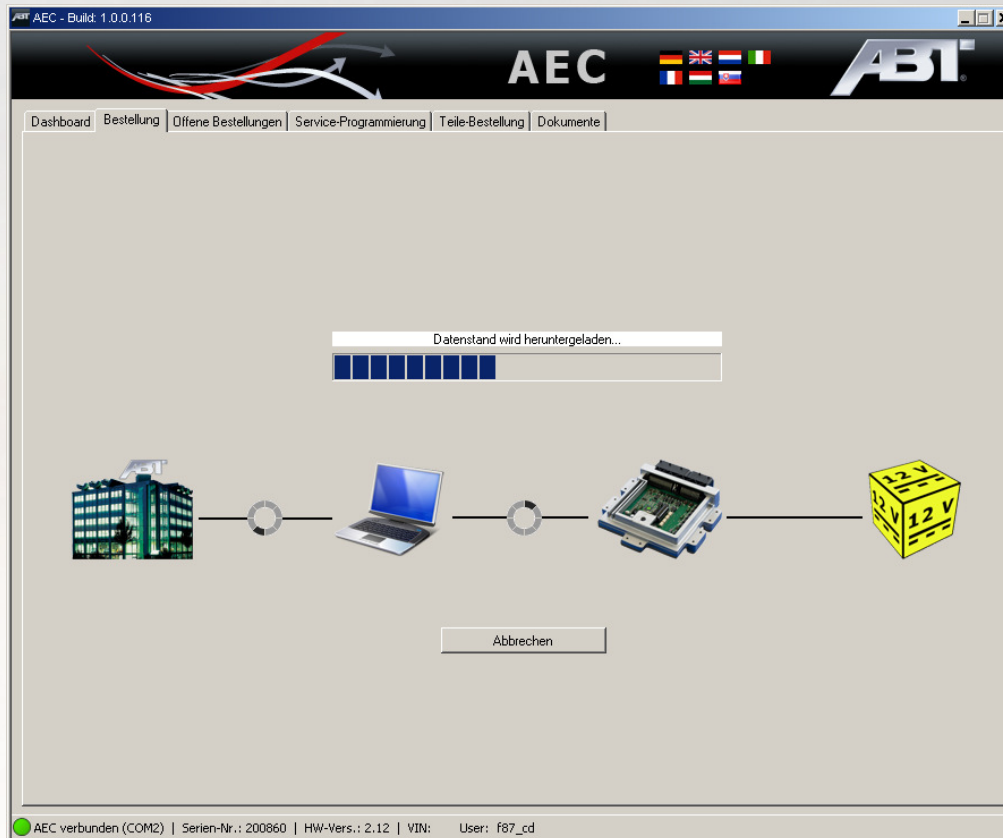
Start tuning process

AEC verbunden (COM2) | Serien-Nr.: 200860 | HW-Vers.: 2.12 | VIN: WVAUZZZ7777777777 User: f87_cd

➤ Order

- Please fill out complete order form
- The yellow fields have to be filled
- After filling all relevant data, you can start your tuning. Press „Start tuning process“

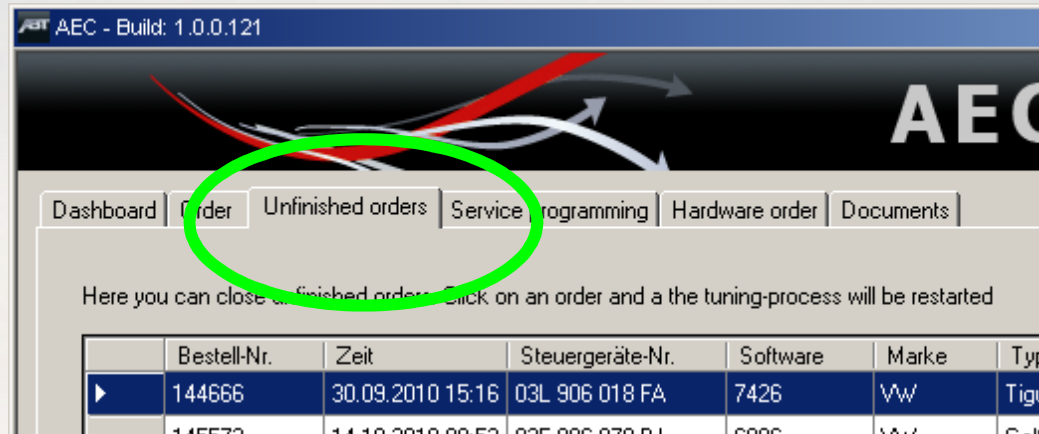
Order



➤ programming

- After starting tuning, you can see the upload to the ECU

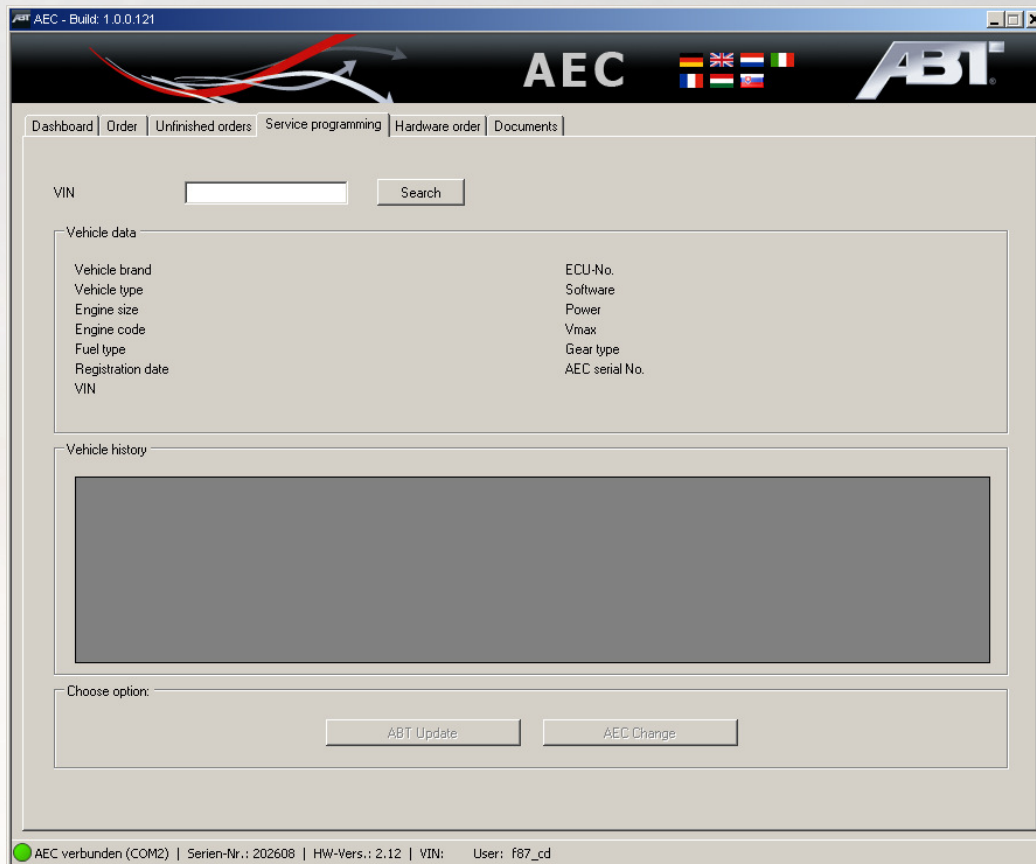
Unfinished orders



➤ Unfinished orders

- Here you can find unfinished orders
- The unfinished orders can be started in this menu

Service programming



➤ Service programming

- You can use Service programming, only with an already tuned car
- Abt Update – if there is an update dataset for your car, you can reprogram the AEC with the new software
- AEC change – here you can program a new AEC – ECU for your car (e.g. old ECU broken)

Service programming



➤ Suggestion on Service programming

- AEC – ECU with serial number 99xxxx can not be programmed through service programming
- Vehicles have been tuned with TEST AEC, serial number 99xxxx can not be programmed with AEC service programming.
- Tuningdata which are downloaded on service are free of charge

Hardware order



ABT AEC - Build: 1.0.0.121

Dashboard | Order | Unfinished orders | Service programming | **Hardware order** | Documents

Here you can order the needed parts:

Vehicle brand: Audi [next...]

Vehicle type: A1_BK [next...]

Engine code: CAXA [next...]

Order list:

Article-No. AEC: **A8K0907552** Left hand drive: **yes** Set quantity: 1

Article-No. Wiring: **A03L971612PT** Right hand drive: **yes**

Article-No. Bracketset: **AZ6R0129607C** **Attention! Part No. can be different**

Article No.	Article description	Set quantity	Order quantity
A8K0907552	AEC V2.12	1	1
A03L971612PT	Wiring PQ 25 / PQ 35 Otto	1	1
AN0114210CAV*	ABT - waste gate kit CAV*	1	1
AN0114160CAX*	ABT - waste gate kit CAX*	1	1
ANS000035	Sticker fuel	1	1
ANS000066	ABT - Power logo	1	1
ANAPRO068	ABT Servicebook	1	1
ANS000045/1	Sticker Powerupgrade	1	1
G98004455	lockwasher M5	4	4
G98000980256	hexagon socket head cap screw M5x6	4	4
G980502271360	cable tie	2	2

Buttons: Cancel order process, Send order

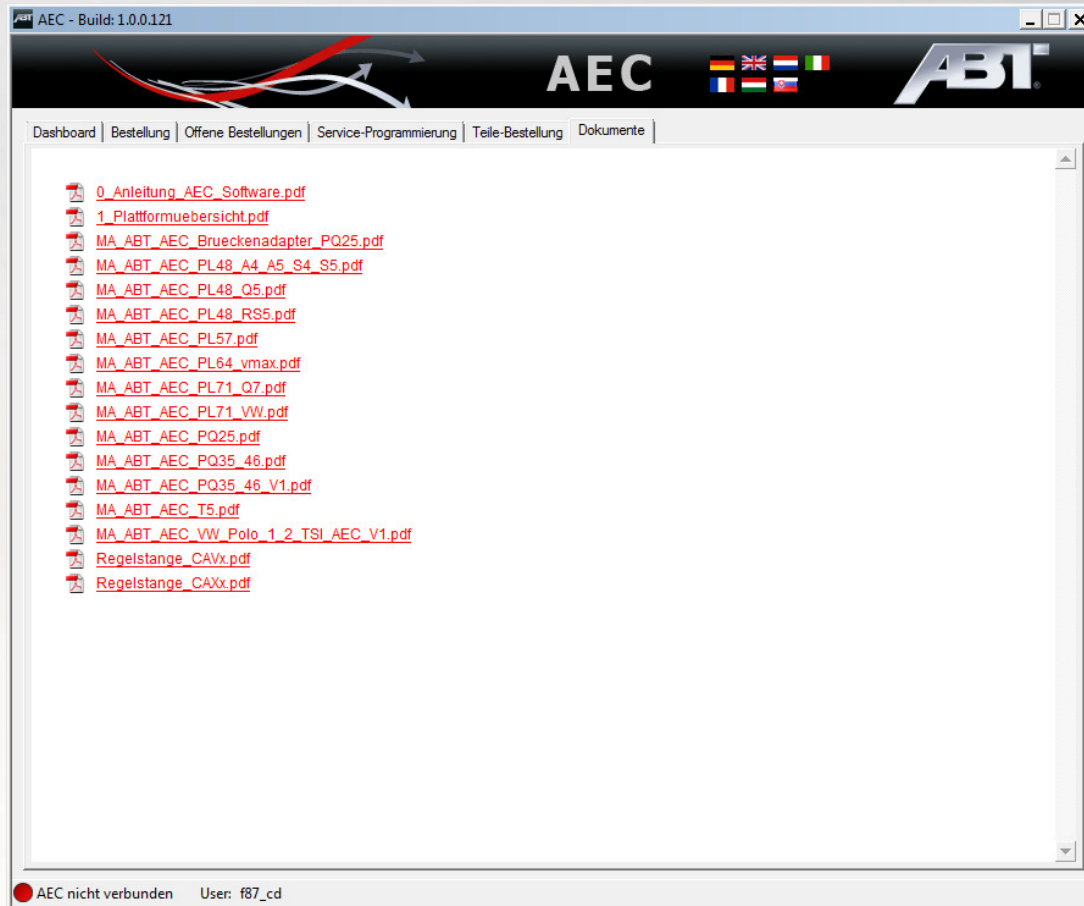
Status bar: AEC verbunden (COM2) | Serien-Nr.: 202608 | HW-Vers.: 2.12 | VIN: | User: f87_cd



➤ Hardware order

1. Choose your type of vehicle
2. Set order numbers (attention for right hand drive vehicle, part numbers can be different)
3. Overview of all parts in the mounting set (attention for right hand drive vehicle, part numbers can be different)
4. Information about possibility in left hand and right hand drive vehicle
5. You can change the amount of a complete set to order
6. The part list can be downloaded as an CSV here
7. You can also change the amount manually in every part
8. You can transmit your order online to the sales department
9. Here you can cancel your order process

Dokuments



Dokuments

The document „platform overview“ is listing all cars to their platform

All mounting instructions are stored here. You can download it as a PDF file. The mounting instructions are named with the platform

Support

Office time Support E-E:

Monday to Friday:

7.30 – 17.30 Uhr

**Pay Attention on German
Holiday!**



Technical support



Technical support



Christian Kailan

- ❖ Programming problems
- ❖ Software
- ❖ Server and dealer network

Phone: +49 (0) 831 – 57140 904

Fax: +49 (0) 831 – 57140 75

E-Mail: c.kailan@abt-sportsline.de

Technical support



Pierre van Kempen

- ❖ Programming problems
- ❖ Software
- ❖ Server and dealer network

Phone: +49 (0) 831 – 57140 904

Fax: +49 (0) 831 – 57140 75

E-Mail: p.vankempen@abt-sportsline.de

Skype: abtsupport2



Mercantile support

Caroline Dannheimer

- ❖ **Mercantile Handling**
- ❖ **contracts**
- ❖ **invoices**

Phone: +49 (0) 831 – 57140 11

Fax: +49 (0) 831 – 57140 75

E-Mail: c.dannheimer@abt-sportsline.de

Thank you for your attention.

www.abt-sportslines.de