



Mounting Instructions

ABT AEC PL57 A6

Table of contents

1 Hints	3
2 Information about electrical consumption	4
3 Scope of delivery.....	5
4 Preparations at the vehicle.....	7
5 Laying sensor wiring harness.....	11
6 AEC Assembly.....	14
7 AEC Installation.....	15
8 Radiator case cover.....	17
9 Completion.....	18
10 Overall view.....	19
11 Warning lamps.....	20

1 Hints

Mounting Instructions ABT AEC PL57 A6

Vehicles: Audi A6 CRTE / CRTD

Assembly time: approx. 90 minutes

Attention: To guarantee optimal function and security of the ABT AEC it is necessary to thoroughly read through the assembly instructions prior to work and to operate the installation as described.

Important steps to take before assembling the ABT AEC:

Before starting the installation, the error memory of the vehicle in which the AEC will be installed has to be read out.

In case of an error log entry:

- Please follow the manufacturer's instructions to resolve errors.
- After the rectification it is necessary to once again take a test drive of minimum 30 km.

Install the ABT AEC only into vehicles which are error-free at the time of installation.

2 Information about electrical consumption

Power upgrades provided by an AEC increase the electrical consumption of a vehicle. An additional current flows. Besides this, the total current is depending on the car type, the additional equipment or similar. In particular cases, a considerable higher power consumption is possible.

The total power consumption determines how often a vehicle can be started without recharging the battery. Furthermore, it depends on the age and charging condition of the battery as well as on the outside temperature. For vehicles which are used sporadically, it is generally recommended to recharge the battery periodically. Thus the battery's durability can be prolonged.




In case the vehicle is not in use for longer than one week, we recommend to replace the AEC with a bridge adapter. In doing so, an additional power consumption is prevented. Due to the adapter, the vehicle remains ready to start and is in its original state.

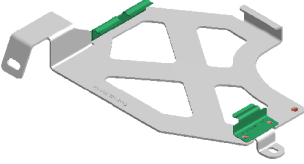
This bridge adapter can be purchased separately.

While staying abroad in areas where fuel quality is rather bad, we recommend to use the bridge adapter.

3 Scope of delivery

Please check the completeness of delivery before starting the installation. In case the delivery is incomplete, please contact ABT Sportsline GmbH.

Quantity	Picture	Description
1		ABT Engine Control
1		Wiring harness
1		<ul style="list-style-type: none"> • "ABT Information" sticker • "ABT Power" sticker • "Super Plus ROZ 98" sticker • ABT service book • 3 holding clamps • 6 lens head screws M5 • 6 spring rings M5 • 1 screw M6 x 20 • 1 car body plate M6 • 3 plate nuts M6 • 1 nut M8

Quantity	Picture	Description
		<ul style="list-style-type: none"> • 1 spring ring M8 • 10 cable ties • bracket A (for AEC) • bracket B (for MSG)
1		<p>AEC bracket</p> <p>Additional (for vehicles with Sound module):</p> <ul style="list-style-type: none"> 2 spring rings 2 countersunk bolt M5 2 washers M5 2 nuts M5

4 Preparations at the vehicle



Remove the radiator tank cover.



Unscrew and remove the splash water case.



Disconnect and remove the standard ECU.



Remove the grid of the ventilation box, disconnect the air quality sensor and unscrew the funnel.



On vehicles with Euro 6 remove the control unit for the catalytic converter heater. Then fix it between the strut brace and the plus-cable with cable ties.



Disconnect the standard ECU and remove it from the bracket.



To create more space, the standard bracket for the cable-guidances can be removed. To do that the standard bracket of the ECU has to be removed first.



Install the standard bracket of the ECU again and fix loose cables and plugs with cable ties.

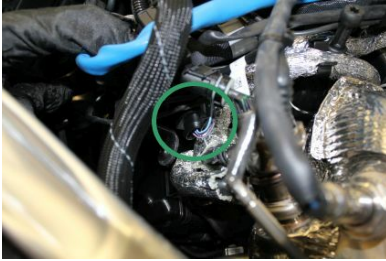


Connect the multipole connector of the AEC with the 91-pin plug of the standard wiring harness.



Connect the 91-pin plug of the AEC wiring harness with the standard ECU. Connect the standard 56-pin plugs with the standard ECU. Put the ECU in the bracket again. Lay the with "AEC" marked plug in direction of the passenger side.

5 Laying sensor wiring harness



Disconnect the plug of the common-rail pressure sensor.

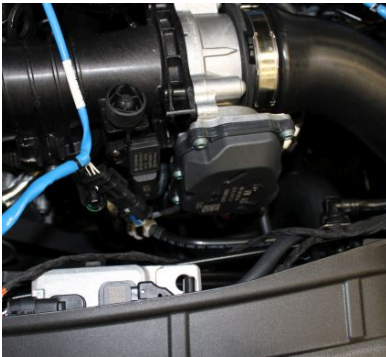


Connect the with "common-rail pressure sensor" marked plug of the AEC wiring harness with the sensor.

Connect the socket of the AEC wiring harness with the previously removed plug.



Disconnect the plug of the boost pressure sensor.



Connect the with "boost pressure" marked plug of the AEC wiring harness with the sensor and the socket of the AEC wiring harness with the previously removed plug.



Disconnect the plug of the "exhaust gas temperature giver 1".



Connect the plug of the AEC wiring harness which is marked with "exhaust gas temperature" with the sensor.



Disconnect the plug of the speed sensor camshaft.

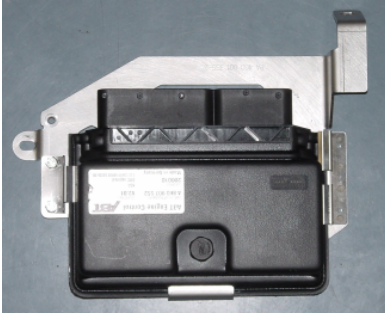


Connect the plug of the AEC wiring harness which is marked with "speed sensor camshaft" with the sensor. Connect the socket of the AEC wiring harness with the previously removed plug.



Lay the plug of the AEC wiring harness which is marked with "AEC" in direction to the indoor air intake.

6 AEC Assembly



Fix the AEC with holding clamps, screws and spring rings (M5) on bracket A.

7 AEC Installation



Fix bracket A with the AEC in the radiator tank. Use following parts for that:

- screw M6
- car body plate M6
- plate nut M6

Push the heating valve a bit aside (if available).



Connect the alarm horn and the control unit for impact sound again. For that you may have to remove cable ties from the car body.



Connect the plugs which are marked with "AEC" with the AEC.



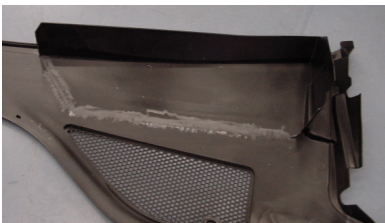
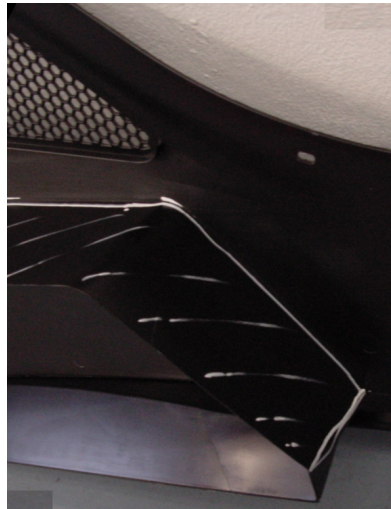
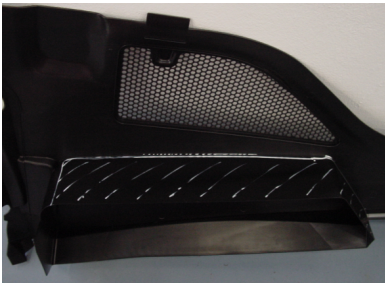
Fix the wiring harness and the multipole connector sufficiently with cable ties.

Attention: Keep attention that the cables do not touch hot devices.

8 Radiator case cover

The radiator tank cover has to be processed as follows:

Cut the marked surface out of the cover.



Polish the cut edge.

Install the cover again.

9 Completion

Read out the error memory and delete if necessary.

Start the engine and take a test drive.

Attach the sticker "ABT Power" to the engine cover and a sticker "ABT Information" on the lock carrier.

Only gasoline engines: Apply the sticker "98 ROZ Super Plus" in the fuel filler flap.

Hint: The AEC can be left built in for manufacturer service updates. The communication with the tester is not affected by the AEC.

If the MIL-lamp and the EPC-lamp is blinking by turns, there is an error in the ABT AEC. Then please contact ABT Sportsline GmbH.

10 Overall view



11 Warning lamps



Malfunktion Indicator Lamp (MIL)



Electronic Power Control (EPC)



Control lamp "Preheat"

ABT Sportsline GmbH

Johann-Abt-Str. 2

D-87437 Kempten / Allgäu

Phone: +49 (0)831 / 57140 - 0

Fax: +49 (0)831 / 72666

Email: info@abt-sportsline.de

www.abt-sportsline.de