



Assembly Instructions

ABT-AEC for PL 57

- Audi A6, S6, RS6
- Audi A7, S7, RS7

Version 10/28/2013



Assembly Instructions for

ABT-AEC for PL 57

Vehicles: Audi A6, A7, S6, S7, RS6, RS7

Assembly time: approx. 90 min

Attention: To guarantee optimal function and security of the ABT AEC it is necessary to thoroughly read through the assembly instructions prior to work and to operate the installation as described.

Important steps to take before assembling the ABT AEC

Before starting the installation, the error memory of the vehicle in which the AEC will be installed has to be read out.

Error log entry:

- Please follow the manufacturer's instructions to resolve errors.
- After the rectification it is necessary to once again take a test drive of minimum 30 km.

Install the ABT AEC only into vehicles which are error-free at the time of installation!

Assembly Instructions
ABT-AEC
PL 57

TABLE OF CONTENTS

1. INFORMATION ABOUT ELECTRICAL CONSUMPTION.....	4
2. SCOPE OF DELIVERY	5
3. PREPARATIONS AT THE VEHICLE.....	7
4. AEC ASSEMBLY	10
5. AEC INSTALLATION	12
6. WATER BOX COVER.....	14
7. COMPLETION	15
8. OVERALL VIEW	16
9. WARNING LAMPS	17



1. Information about electrical consumption

Power upgrades provided by an AEC increase the electrical consumption of a vehicle. An additional electric current flows. Besides this, the total current is depending on the car type, additional equipment or similar. In individual cases, considerable higher power consumption is possible.

The total power consumption determines how long a vehicle can be started without recharging the battery. Furthermore, this time is depending on the age and charging condition of the battery as well as on the outside temperature.

For vehicles which are used only sporadically, it is generally recommended to recharge the battery periodically. Thus the battery's durability can be prolonged.

In case the vehicle is not in use for longer than one week, we recommend replacing the AEC with a bridge adapter. In doing so, the additional power consumption is prevented. Due to the adapter, the vehicle remains ready to start and is in its original state.

This bridge adapter can be obtained separately.

While staying in countries with bad fuel quality we also recommend the usage of the bridge adapter.

Assembly Instructions
ABT-AEC
PL 57

2. Scope of delivery

Please check if delivery is complete before starting the installation. In case the delivery is incomplete, please contact our service team at ABT Sportsline.

ABT Engine Control



Wiring harness



Assembly Instructions
ABT-AEC
PL 57

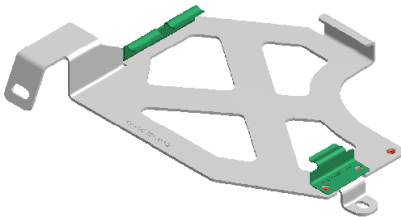


Bracket and Accessories Set



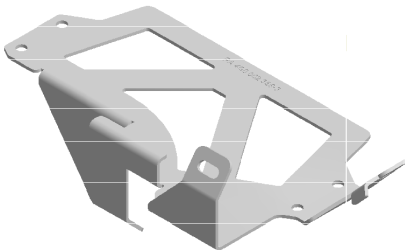
consisting of:

- ABT information sticker
- "ABT Power" sticker
- "98 ROZ Super Plus" sticker
- ABT service book
- 3 retaining clips
- 6 screws M5
- 6 spring rings M5
- 4 washers M5
- 1 screw M6 x 20
- 1 large diameter washer M6
- 3 disc nuts M6
- 1 screw nut M8
- 1 spring ring M8
- 10 cable ties (not shown)
- bracket A (for AEC)
- bracket B (for MSG)



Additionally (for cars with sound generator)

- 2 spring rings M5
- 2 washers M5
- 2 screws M5 countersunk
- 2 nuts M5



3. Preparations at the vehicle



Remove the water box cover (below windscreen).



Unscrew and remove the splash water tank.



Disconnect and remove the engine control unit.

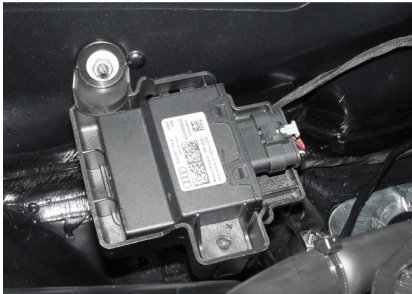


Detach the grid of the ventilation box, disconnect the air quality sensor and unscrew the ventilation shaft.

Assembly Instructions
ABT-AEC
PL 57



If available, unscrew and disconnect the horn and the alarm system.



For cars with control unit for solid-borne noise, unmount it.



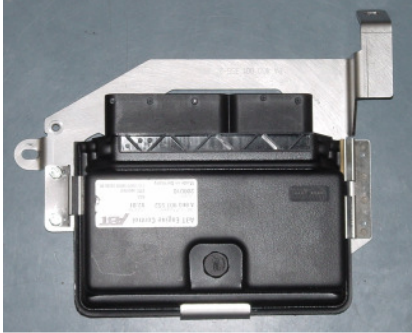
For cars with euro 6 unscrew and disconnect the ecu for the catalytic converter and fix it between strut bar and the plus line with cable ties.

Assembly Instructions
ABT-AEC
PL 57

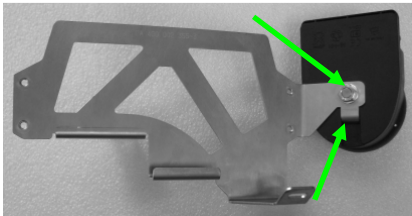


Disassemble control unit for solid-borne noise (and if available, alert horn) from the bracket.

4. AEC assembly



Attach the AEC to bracket A with retaining clip, screws and spring rings M5.

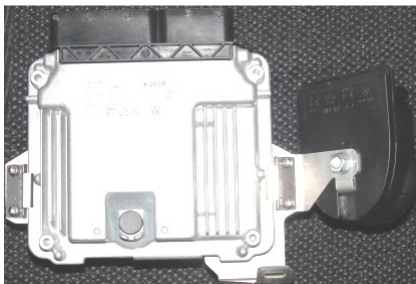


If the vehicle is equipped with an alarm system horn, fix it to bracket B (without original bail) by means of nut and spring ring M8. The bail of the bracket fits to the rail of the horn.



If the vehicle is equipped with a control unit for solid-borne noise, fix it to bracket B with screws, nuts, spring rings and countersunk screws M5.

Assembly Instructions
ABT-AEC
PL 57



Attach the ECU to bracket B by means of 2 retaining clips, 4 screws, washers and spring rings M5. Put the washers between the clips and the bracket to adjust the distance.

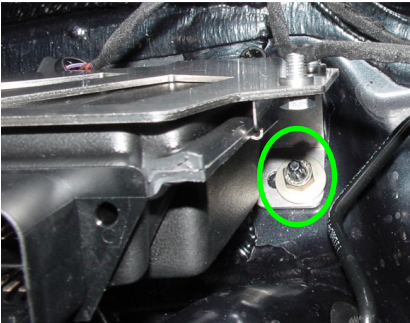
5. AEC installation



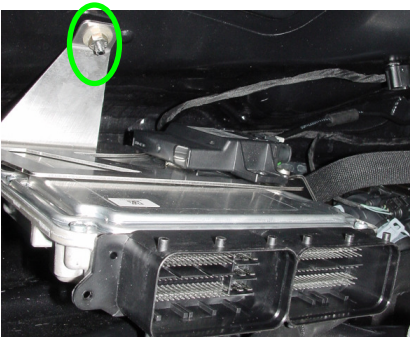
Screw bracket A with the AEC to the water box (below windscreen). Use following parts:

- Screw M6
- Large diameter washer M6
- Disc nut M6

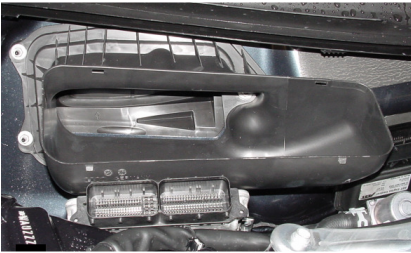
Put the auxiliary heating valve aside, if available.



Screw bracket B with ECU, control unit for solid-borne noise and the alarm system horn to the ventilation box. Use two disc nuts M6.



Assembly Instructions
ABT-AEC
PL 57



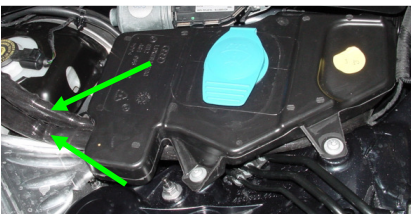
Reconnect the alarm system horn and the control unit for solid-borne noise. Reinstall the ventilation box.



Connect the plugs marked with 'AEC' to the AEC.
Connect the unmarked plugs to the engine control unit.



Connect the male multipoint connector to the serial plugs.



Mount the splash water tank. To avoid rattling, insert the male multipoint connector so that it is jammed by the tank.
Run cables along interior front side as shown.

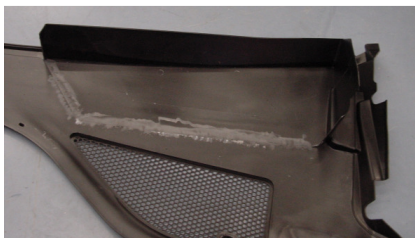
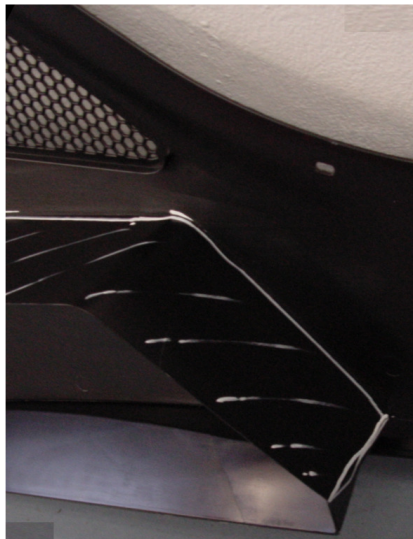
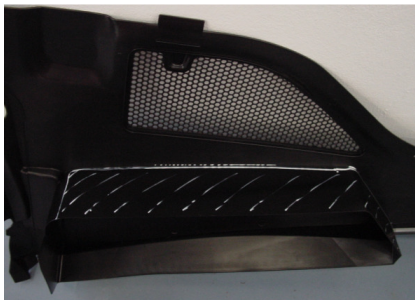


Run the cable as shown in the figure and fix it with several cable ties. Take care that no chafe marks occur.

6. Water box cover

The water box cover must be processed as follows.

Cut the marked areas out of the cover.



Abrade the cut edge planar.

Reattach the cover.

Assembly Instructions
ABT-AEC
PL 57

7. Completion

Reinstall all serial parts to the vehicle.

For 3,0 Otto Engines:

Reconfigure the throttle valve and the control butterfly valve via diagnosis system.

Read out the error memory and delete it if necessary.

Start the engine.

Take a test drive.

Attach the sticker "Abt Power" to the engine cover and the information sticker to the lock carrier.

Only gasoline engines: Apply the '98 ROZ Super Plus' sticker in the fuel filler flap.

Hint:

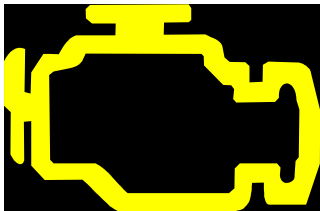
The AEC can be left built in for manufacturer service updates.
The communication with the tester is not affected by the AEC.

If the MIL-lamp and EPC-lamp is blinking by turns, there is an error in the ABT AEC. Then please contact ABT Sportsline.

8. Overall view



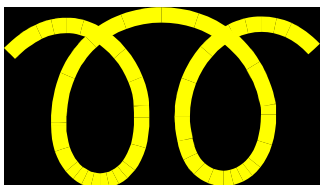
9. Warning lamps



Malfunction-Indicator-Lamp (MIL)



Electronic Power Control (EPC)



Control lamp "Preheat"

Assembly Instructions
ABT-AEC
PL 57



Abt Sportsline GmbH
Johann-Abt-Str. 2
D-87437 Kempten / Allgäu
Tel.: +49 (0)831 / 5 71 40-0
Fax: +49 (0)831 / 7 26 66
info@abt-sportsline.de
www.abt-sportsline.de