



# **Assembly Instructions**

ABT-AEC for PL 64

- Audi A8

Version: 04/19/2012

# Assembly Instructions for ABT-AEC for PL 64

Car model: Audi A8

Assembly time: approx. 90 min

**Attention: To guarantee optimal function and security of the ABT AEC it is necessary to thoroughly read through the assembly instructions prior to work and to operate the installation as**

## **Important steps to take before assembling the ABT AEC**

Before starting the installation, the error memory of the vehicle in which the AEC will be installed has to be read out.

### Error log entry:

- Please follow the manufacturer's instructions to resolve errors.
- After the rectification it is necessary to once again take a test drive of minimum 30 km.

Install the ABT AEC only into vehicles which are error-free at the time of installation!

Assembly Instructions  
ABT-AEC  
PL 64

## **TABLE OF CONTENTS**

<b>1. INFORMATION ABOUT ELECTRICAL CONSUMPTION.....</b>	<b>4</b>
<b>2. SCOPE OF DELIVERY .....</b>	<b>5</b>
<b>3. PREPARATIONS AT THE VEHICLE.....</b>	<b>7</b>
<b>4. AEC ASSEMBLY .....</b>	<b>8</b>
<b>5. AEC INSTALLATION .....</b>	<b>9</b>
<b>6. COMPLETION .....</b>	<b>11</b>
<b>7. OVERALL VIEW .....</b>	<b>12</b>
<b>8. WARNING LAMPS .....</b>	<b>13</b>

## **1. Information about electrical consumption**

Power upgrades provided by an AEC increase the electrical consumption of a vehicle. An additional electric current flows. Besides this, the total current is depending on the car type, additional equipment or similar. In individual cases, considerable higher power consumption is possible.

The total power consumption determines how long a vehicle can be started without recharging the battery. Furthermore, this time is depending on the age and charging condition of the battery as well as on the outside temperature.

For vehicles which are used only sporadically, it is generally recommended to recharge the battery periodically. Thus the battery's durability can be prolonged.

In case the vehicle is not in use for longer than one week, we recommend replacing the AEC with a bridge adapter. In doing so, the additional power consumption is prevented. Due to the adapter, the vehicle remains ready to start and is in its original state.

This bridge adapter can be obtained separately.

While staying in countries with bad fuel quality we also recommend the usage of the bridge adapter.

Assembly Instructions  
ABT-AEC  
PL 64

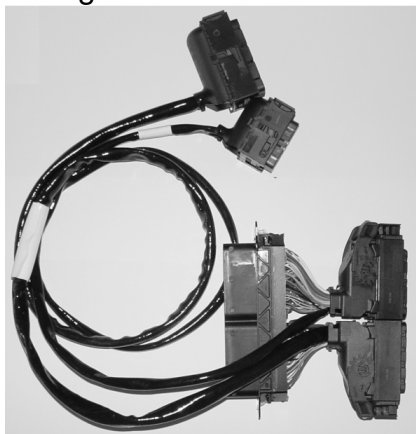
## 2. Scope of delivery

Please check if delivery is complete before starting the installation. In case the delivery is incomplete, please contact our service team at ABT Sportsline.

### ABT Engine Control



### Wiring harness



## Assembly Instructions

ABT-AEC

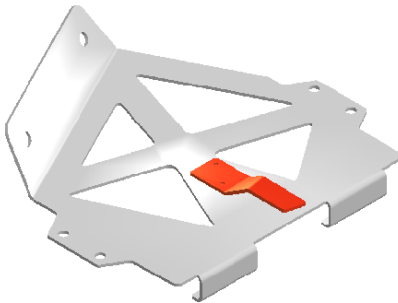
PL 64

### Bracket and Accessories Set



consisting of:

- ABT information sticker
- "ABT Power" sticker
- "98 ROZ Super Plus" sticker
- ABT service book
- 2 retaining clips
- 4 lock washers
- 4 screws M5
- 2 screw nuts with corrugated disc M6
- 10 cable ties (not shown)
- bracket

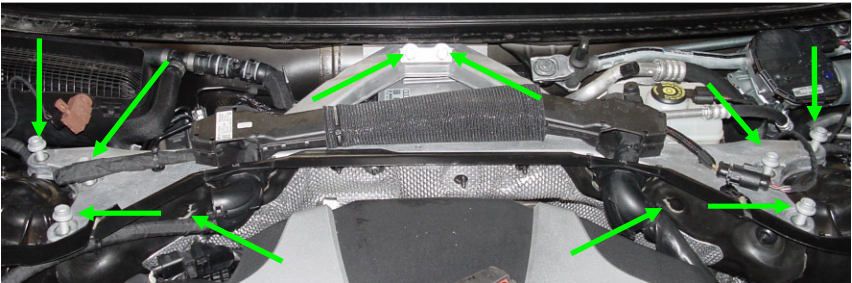


### 3. Preparations at the vehicle



Remove the windscreen wipers, the engine hood seal and loosen the plastic cover beneath the front screen.

Remove the strut bar according to the manufacturer's information. Loosen the marked screws.



Disconnect the engine control unit.

Assembly Instructions  
ABT-AEC  
PL 64

#### 4. AEC assembly



Attach the AEC with clips, screws and lock washers to the bracket.

## 5. AEC installation



Connect the Abt wiring harness to the serial plugs. Connect the engine control unit to the Abt wiring harness.

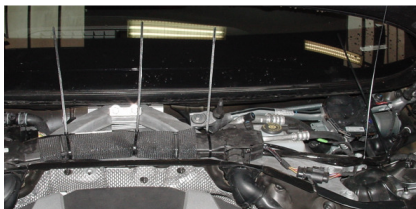


Reattach the strut brace. Stow male multipoint connector and serial plugs and tie with cable ties.

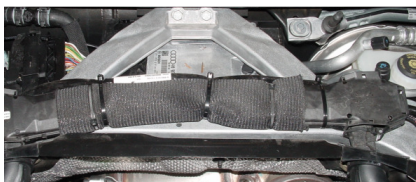


Attach the control unit bracket driver's side in front of the wiper motor to the existing bolt by using the two M6 nuts from the accessories set. Take care that bracket clip is in the lug of the vehicle.

Assembly Instructions  
ABT-AEC  
PL 64



Connect the AEC. Run all wires above the strut bar and fix it with cable ties. Tie excessive wire length to the AEC.



Assembly Instructions  
ABT-AEC  
PL 64

## **6. Completion**

Reinstall all serial parts to the vehicle.

Read out the error memory and delete it if necessary.

Start the engine.

Take a test drive.

Apply Abt Power Sticker at engine cover and the information sticker at the hood latch.

### **Hint:**

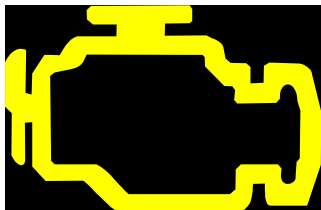
The AEC can be left built in for manufacturer service updates.  
The communication with the tester is not affected by the AEC.

**If the MIL-lamp and EPC-lamp respectively preheat-lamp is blinking by turns, there is an error in the ABT AEC.  
In this case please contact ABT Sportsline.**

## 7. Overall view



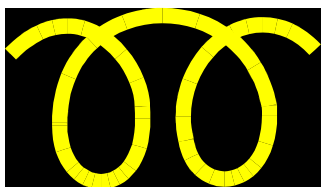
## 8. Warning lamps



Malfunction-Indicator-Lamp (MIL)



Electronic Power Control (EPC)



Control lamp "Preheat"

Assembly Instructions  
ABT-AEC  
PL 64

Abt Sportsline GmbH  
Johann-Abt-Str. 2  
D-87437 Kempten / Allgäu  
Tel.: +49 (0)831 / 5 71 40-0  
Fax: +49 (0)831 / 7 26 66  
[info@abt-sportsline.de](mailto:info@abt-sportsline.de)  
[www.abt-sportsline.de](http://www.abt-sportsline.de)