



Assembly Instructions

ABT-AEC for PL 71

- Audi Q7

Version 04/19/2012



Assembly Instructions for ABT-AEC for PL 71

Car Model: Audi Q7

Assembly Time: approx. 90 min

Attention: To guarantee optimal function and security of the ABT AEC it is necessary to thoroughly read through the assembly instructions prior to work and to operate the installation as described.

Important steps to take before assembling the ABT AEC

Before starting the installation, the error memory of the vehicle in which the AEC will be installed has to be read out.

Error log entry:

- To repair possibly defects, please operate according to the manufacturer's instructions.
- After the repair it is necessary to once again take a test drive of minimum 30 km.

It is only allowed to install the ABT AEC into vehicles which are error-free at the time of installation.



TABLE OF CONTENTS

| | |
|---|-----------|
| 1. INFORMATION ABOUT ELECTRICAL CONSUMPTION..... | 4 |
| 2. SCOPE OF DELIVERY | 5 |
| 3. PREPARATIONS AT THE VEHICLE..... | 7 |
| 4. ATTACHING THE AEC..... | 9 |
| 5. INSTALLATION OF THE AEC | 11 |
| 6. COMPLETION | 14 |
| 7. OVERALL VIEW | 15 |
| 8. WARNING LAMPS | 16 |



1. Information about electrical consumption

Power upgrades provided by an AEC increase the electrical consumption of a vehicle. An additional electric current flows. Besides this, the total current is depending on the car type, additional equipment or similar. In individual cases, considerable higher power consumption is possible.

The total power consumption determines how long a vehicle can be started without recharging the battery. Furthermore, this time is depending on the age and charging condition of the battery as well as on the outside temperature.

For vehicles which are used only sporadically, it is generally recommended to recharge the battery periodically. Thus the battery's durability can be prolonged.

In case the vehicle is not in use for longer than one week, we recommend replacing the AEC with a bridge adapter. In doing so, the additional power consumption is prevented. Due to the adapter, the vehicle remains ready to start and is in its original state.

This bridge adapter can be obtained separately.

While staying in countries with bad fuel quality we also recommend the usage of the bridge adapter.

2. Scope of delivery

Please check for completeness of delivery before starting the installation. In case the delivery is incomplete, please contact our service team at ABT Sportsline.

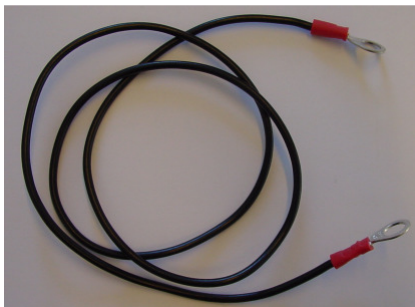
ABT Engine Control



Wiring harness



Assembly Instructions
ABT-AEC
PL 71
Ground extension



Bracket and Accessories Set



consisting of:

- ABT information sticker
- ABT Power sticker
- Sticker Super Plus ROZ 98
- ABT service book
- 1 screw nut with corrugated disc
- 2 screw M6x20
- 5 cable ties (without figure)
- bracket



3. Preparations at the vehicle



Remove windscreen wipers, the hood seal and the plastic cover beneath the front screen.



Unhinge and unplug the engine control unit from the original bracket. If there is a theft protection around the unit, the cage has to be removed to unplug.



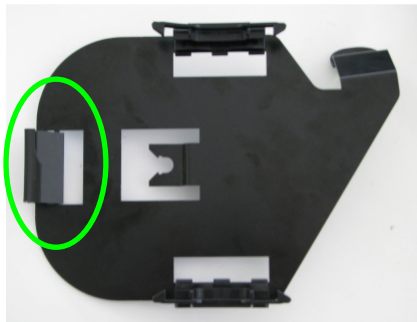
Unscrew the cap nut from the ground point. Loose the ground cable that goes to the ECU.

Assembly Instructions
ABT-AEC
PL 71

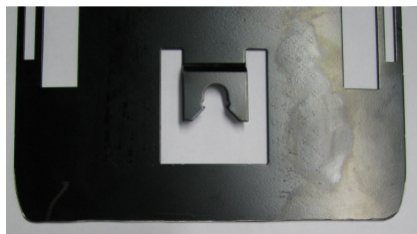


Connect the ground cable to the ground extension, use the M6x20 screw. Screw it to the ground point.

4. Attaching the AEC

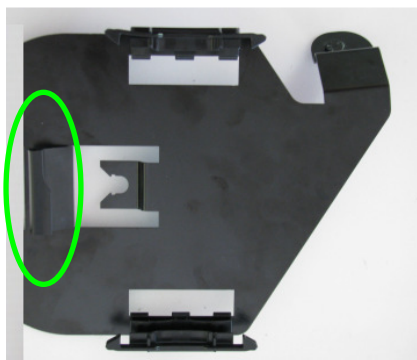


Unhinge the marked clamp.



Cut the not needed part of the bracket.

Attention:
Take care, that there are no sharp edges. If needed, use a rand tape.



Attach the clamp to the marked position.

5. Installation of the AEC



Connect the provided wiring harness to the serial plug.



Both halves of the multipoint connector are stowed below the air box. If there are space problems, open the clamp and loosen the nuts of the air box. Lift the air box to gain more space.

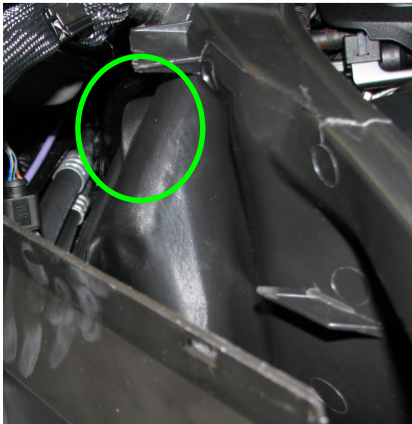


Connect the wiring harness to the engine control unit. Use the plugs which ends have the identification label. Mount the ECU in its bracket.

Assembly Instructions
ABT-AEC
PL 71

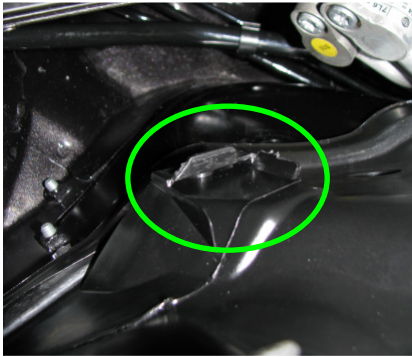


Hinge the AEC with its bracket to the inside of the water tank. Connect the AEC to the wiring harness. Use the plugs which are marked with 'AEC'.

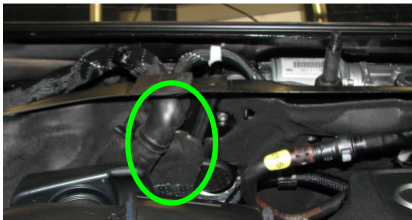


At the marked spot is a mounting hole. Remove the rubber plug from the hole. Put the bolt of the bracket through the hole.

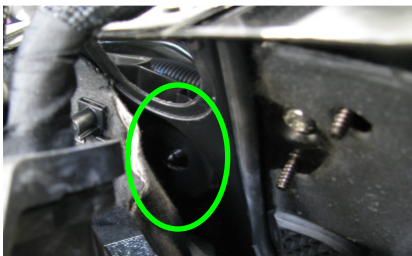
Assembly Instructions
ABT-AEC
PL 71



Take care that the bracket is hinged to the clip (see the picture, top view).



Viewed from the engine side: The marked spot shows the hole. Lift the cover to get to the bolt.



Screw the M6 nut to the bolt.



6. Completion

Reinstall all serial parts in reverse order to the vehicle.

For 3,0 Otto engines:

Reconfigure the throttle valve and the control butterfly valve via diagnosis system.

Read out the error memory and delete if necessary.

Start the engine.

Take a test drive.

Apply Abt Power Sticker at engine cover and the information sticker at the hood latch.

Only gasoline engines: Apply the '98 ROZ Super Plus' sticker in the fuel filler flap.

Hint:

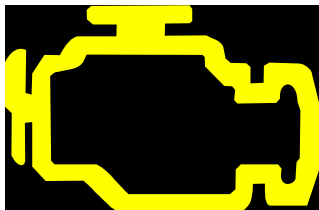
The AEC can be left built in for manufacturer service updates.
The communication with the tester is not affected by the AEC.

**If the MIL-lamp and EPC-lamp respectively preheat-lamp is blinking by turns, there is an error in the ABT AEC.
In this case please contact ABT Sportsline.**

7. Overall view



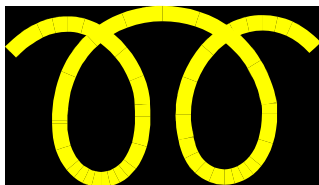
8. Warning lamps



Malfunction Indicator Lamp (MIL)



Electronic Power Control (EPC)



Control lamp "Preheat"

Assembly Instructions
ABT-AEC
PL 71



ABT Sportsline GmbH
Johann-Abt-Str. 2
D-87437 Kempten / Allgäu
Tel.: +49 (0)831 / 5 71 40-0
Fax: +49 (0)831 / 7 26 66
info@abt-sportsline.de
www.abt-sportsline.de