



Assembly Instructions

ABT-AEC for PL 71

- VW Touareg (3,0l capacity)



Assembly Instructions for

ABT-AEC for PL 71

Vehicles: VW Touareg (3,0l capacity)

Assembly Time: ca. 90 min

Attention: To guarantee optimal function and security of the ABT AEC it is necessary to thoroughly read through the assembly instructions prior to work and to operate the installation as described.

Important steps to take before assembling the ABT AEC

Before starting the installation, the error memory of the vehicle in which the AEC will be installed has to be read out.

Error log entry:

- Please follow the manufacturer's instructions to resolve errors.
- After the rectification it is necessary to once again take a test drive of minimum 30 km.

Install the ABT AEC only into vehicles which are error-free at the time of installation!



TABLE OF CONTENTS

1. INFORMATION ABOUT ELECTRICAL CONSUMPTION.....	4
2. SCOPE OF DELIVERY	5
3. PREPARATIONS AT THE VEHICLE.....	7
4. ATTACHING THE AEC.....	8
5. INSTALLATION OF THE AEC	9
6. COMPLETION	11
7. OVERALL VIEW	12
8. WARNING LAMPS	13



1. Information about electrical consumption

Power upgrades provided by an AEC increase the electrical consumption of a vehicle. An additional electric current flows. Besides this, the total current is depending on the car type, additional equipment or similar. In individual cases, considerable higher power consumption is possible.

The total power consumption determines how long a vehicle can be started without recharging the battery. Furthermore, this time is depending on the age and charging condition of the battery as well as on the outside temperature.

For vehicles which are used only sporadically, it is generally recommended to recharge the battery periodically. Thus the battery's durability can be prolonged.

In case the vehicle is not in use for longer than one week, we recommend replacing the AEC with a bridge adapter. In doing so, the additional power consumption is prevented. Due to the adapter, the vehicle remains ready to start and is in its original state.

This bridge adapter can be obtained separately.

While staying in countries with bad fuel quality we also recommend the usage of the bridge adapter.

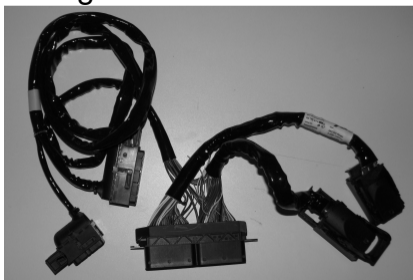
2. Scope of delivery

Please check for completeness of delivery before starting the installation. In case the delivery is incomplete, please contact our service team at ABT Sportsline.

ABT Engine Control



Wiring harness



Assembly Instructions
ABT-AEC
PL 71

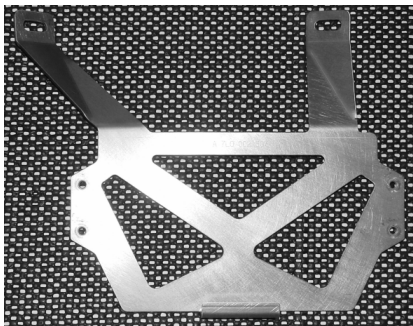


Bracket and Accessories Set

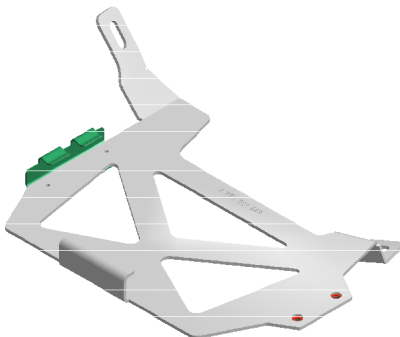


consisting of:

- ABT information sticker
- ABT Power sticker
- sticker Super Plus ROZ 98
- ABT service book
- 2 plastic washer nuts
- 2 retaining clips
- 4 screws M5
- 4 spring rings M5
- 5 cable ties (without figure)
- bracket



Also this bracket can be included:



If so, the following parts are included in the accessories set:

- 1 retaining clip
- 2 screws M5
- 2 spring rings M5

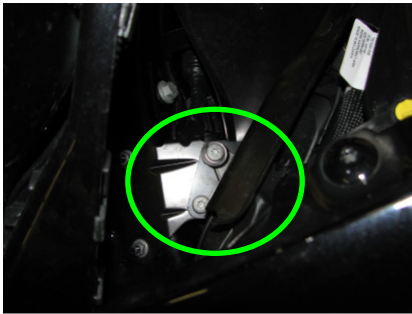
3. Preparations at the vehicle



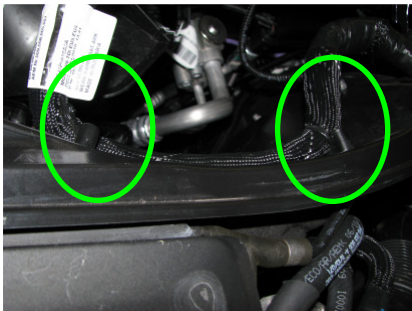
Remove the windscreen wipers, the engine hood seal and loosen the plastic cover beneath the front screen on the passenger's side.



Remove the pan on the passenger's side if it is existent. Unscrew the marked screws for that.



The ECU bracket is freed now. Unplug the ECU.



Rip up the fasteners (cable ties) of the wiring harness at the marked spots and unscrew the holders.



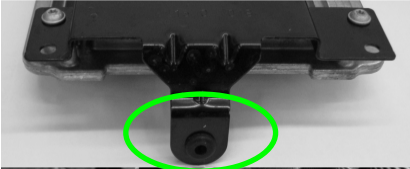
4. Attaching the AEC



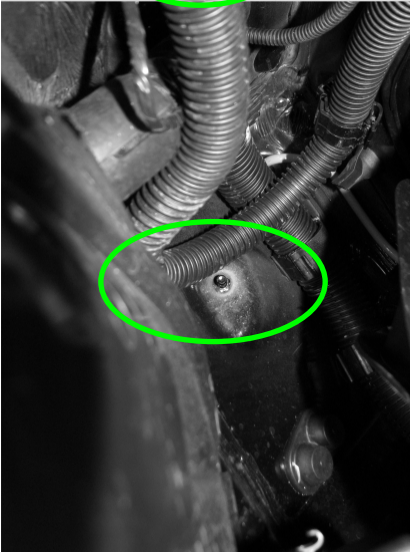
Attach the AEC with clamps, screws and spring rings to the bracket.



5. Installation of the AEC

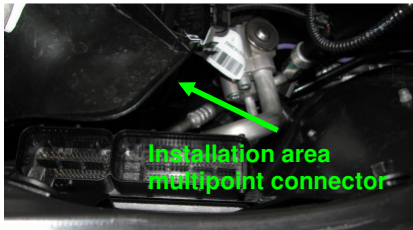


If the control unit was equipped with a anti-theft protection reattach it at the original position. Take care that the rubber socket is fitting on the bolt of the car body. Refit the bracket.

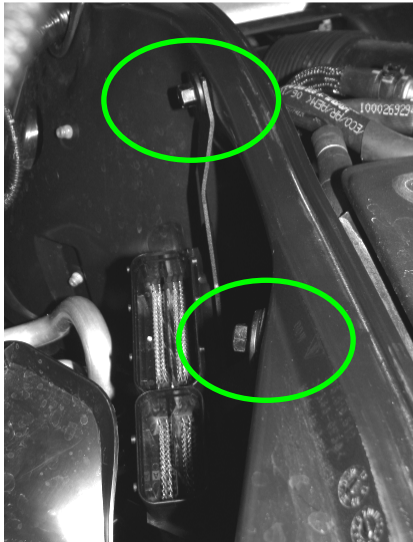


Connect the ABT wiring harness to the serial plugs. Plug the ECU to the ABT wiring harness. Use the cables with the identification plate.

Assembly Instructions
ABT-AEC
PL 71



The multipoint connector is stowed below the ventilation box.



Mount the AEC with the plastic nuts to the bolts the original wiring was fastened. Connect the AEC to the ABT wiring harness. Use the plugs which are marked with 'AEC'. Bundle excessive cables with cable ties.



6. Completion

Reinstall all serial parts in reverse order to the vehicle.

Read out the error memory and delete if necessary.

Start the engine.

Take a test drive.

Apply Abt Power Sticker at engine cover and the information sticker at the hood latch.

Only gasoline engines: Apply the '98 ROZ Super Plus' sticker in the fuel filler flap.

Hint:

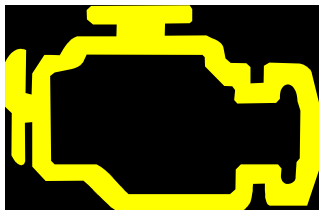
The AEC can be left built in for manufacturer service updates.
The communication with the tester is not affected by the AEC.

**If the MIL-lamp and EPC-lamp respectively preheat-lamp is blinking by turns, there is an error in the ABT AEC.
In this case please contact ABT Sportsline.**

7. Overall view



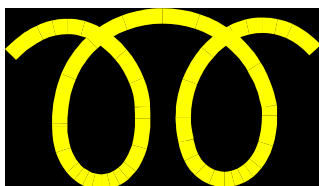
8. Warning lamps



Malfunction Indicator Lamp (MIL)



Electronic Power Control (EPC)



Control lamp "Preheat"

Assembly Instructions
ABT-AEC
PL 71



ABT Sportsline GmbH
Johann-Abt-Str. 2
D-87437 Kempten / Allgäu
Tel.: +49 (0)831 / 5 71 40-0
Fax: +49 (0)831 / 7 26 66
info@abt-sportsline.de
www.abt-sportsline.de