



Assembly Instructions

ABT-AEC for PQ 35 & PQ 46

- Audi A3
- VW Scirocco, Golf VI, Tiguan, Touran, Passat, Caddy
- Skoda Octavia, Superb, Yeti
- Seat Leon, Altea

Assembly Instructions
ABT-AEC V2
PQ 35 & PQ 46



Assembly Instructions for

ABT-AEC for PQ 35 & PQ 46

Vehicles: Audi A3
VW Golf VI, Scirocco, Tiguan, Touran,
Passat, Caddy
Skoda Octavia, Superb, Yeti
Seat Leon, Altea

Assembly time: approximately 90 min

Attention: To guarantee optimal function and security of the ABT AEC it is necessary to thoroughly read through the assembly instructions prior to work and to operate the installation as described.



Important steps to take before assembling the ABT AEC:

In case the battery is only covered with fabric following parts must be refitted for the installation:

- Battery casing: 3C0 915 335
- Battery casing: 3C0 915 336 A
- Battery casing cover: 3C0 915 443 A

Before starting to install the error memory of the vehicle, in which the AEC will be installed, has to be read out.

Error log entry:

- To repair possibly defects please operate according to the manufacturer's instructions.
- After the repair it is necessary to once again take a test drive of minimum 30 km.

It is only allowed to install the ABT AEC into vehicles which are error-free at the time of installation.



TABLE OF CONTENTS

1. INFORMATION ABOUT ELECTRICAL CONSUMPTION.....	5
2. SCOPE OF DELIVERY	6
3. PREPARATIONS AT THE VEHICLE.....	8
4. ATTACHING THE AEC.....	11
5. INSTALLATION OF THE AEC	12
6. COMPLETION	14
7. OVERALL VIEW	15
8. WARNING LAMPS	16



1. Information about electrical consumption

Power upgrades provided by an AEC increase the electrical consumption of a vehicle. An additional electric current flows. Besides this, the total current is depending on the car type, additional equipment or similar. In individual cases, considerable higher power consumption is possible.

The total power consumption determines how long a vehicle can be started without recharging the battery. Furthermore, this time is depending on the age and charging condition of the battery as well as on the outside temperature.

For vehicles which are used only sporadically, it is generally recommended to recharge the battery periodically. Thus the battery's durability can be prolonged.

In case the vehicle is not in use for longer than one week, we recommend replacing the AEC with a bridge adapter. In doing so, the additional power consumption is prevented. Due to the adapter, the vehicle remains ready to start and is in its original state.

This bridge adapter can be obtained separately.

While staying in countries with bad fuel quality we also recommend the usage of the bridge adapter.

Assembly Instructions
ABT-AEC V2
PQ 35 & PQ 46



2. Scope of delivery

Please check for completeness of delivery before starting the installation. In case the delivery is incomplete, please contact our service team at ABT Sportsline.

ABT Engine Control



Wiring harness

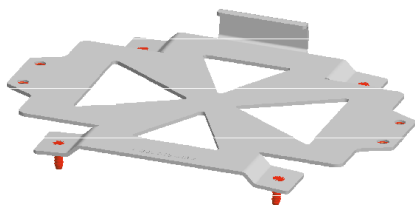


Assembly Instructions

ABT-AEC V2

PQ 35 & PQ 46

Mounting-/accessories kit



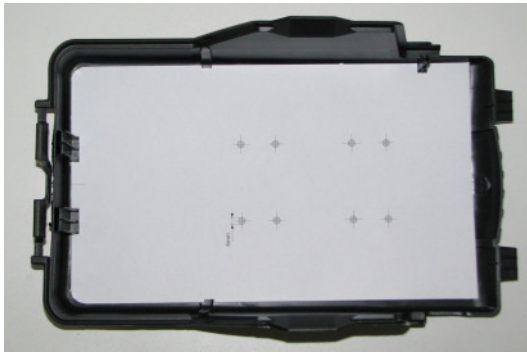
consisting of:

- ABT information sticker
- “ABT Power” sticker
- “ROZ 98 Super Plus” sticker
- ABT service book
- 4 Plastic washer nuts
- 2 Retaining clips
- 4 Screws M5
- 4 Spring rings M5
- 15 Cable ties (without figure)
- Mounting plate

3. Preparations at the vehicle

In case the battery is only covered with fabric following parts must be refitted for the installation:

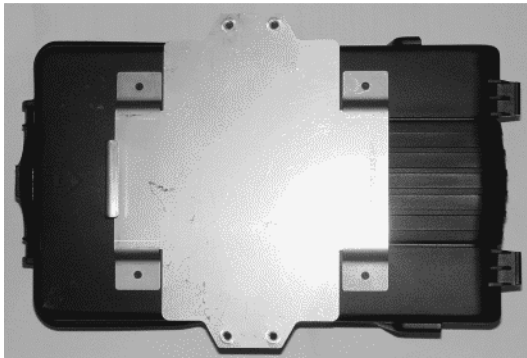
- Battery casing: 3C0 915 335
- Battery casing: 3C0 915 336 A
- Batterie casing cover: 3C0 915 443 A



Remove the battery case cover, cut out the applicable drill jig and place it into the cover.

See the description on the drill template!

First pre-bore the marked bore holes with 2 mm, then finish with 5 mm and remove burrs.



Screw the bracket with the plastic nuts from the inside onto the battery cover.

Assembly Instructions
ABT-AEC V2
PQ 35 & PQ 46



Remove the windscreen wipers, the engine hood seal and loosen the plastic cover beneath the front screen.



Unhinge or unplug (depending on design) the windscreen washer nozzles before removing the cover lid.



Detach the stiffener wall. For this purpose, remove the available cable ties.

Assembly Instructions
ABT-AEC V2
PQ 35 & PQ 46



Remove the plastic clamp from the wiring harness duct behind the battery.



Unhinge and unplug the control unit from the original bracket.

Assembly Instructions
ABT-AEC V2
PQ 35 & PQ 46

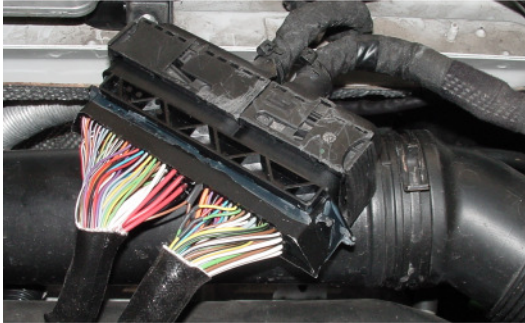


4. Attaching the AEC



Attach the AEC with clamps,
screws and spring rings to the
bracket.

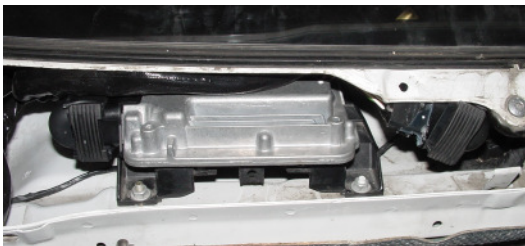
5. Installation of the AEC



Connect the provided wiring harness to the serial plug.



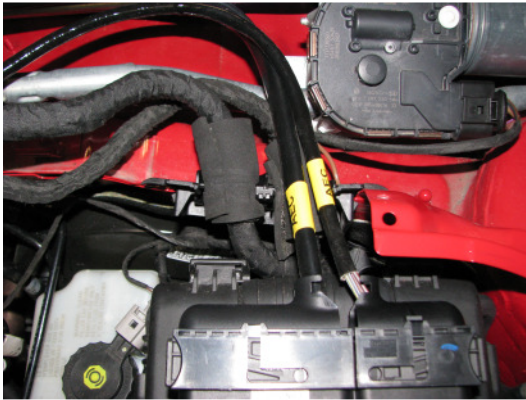
Connect the cables that are carrying the identification plate to the engine control unit.



Clip the control unit in the original bracket, with the connectors to the right (seen in driving direction). If the wiring is to short, mount the control unit shifted and turned around.

Fasten the wiring harness at appropriate bolts.

Assembly Instructions
ABT-AEC V2
PQ 35 & PQ 46



Connect the AEC to the marked ('AEC') cables and attach the battery case cover including AEC. Lay the cables through the guide and fasten it with the plastic clamp.



Attach the stiffener wall, fasten the cables to the given cable retainers at the stiffener wall and lay them along the original cables. Fasten excessive cable length on the mounting plate.

Important:
Check that the wiper linkages can move freely. Take care that no cables get jammed.



6. Completion

Reinstall all serial parts in reverse order to the vehicle.

Read out the error memory and delete if necessary.

Start the engine.

Take a test drive.

Apply Abt Power Sticker at engine cover and the information sticker at the hood latch.

Only gasoline engines: Apply the '98 ROZ Super Plus' sticker in the fuel filler flap.

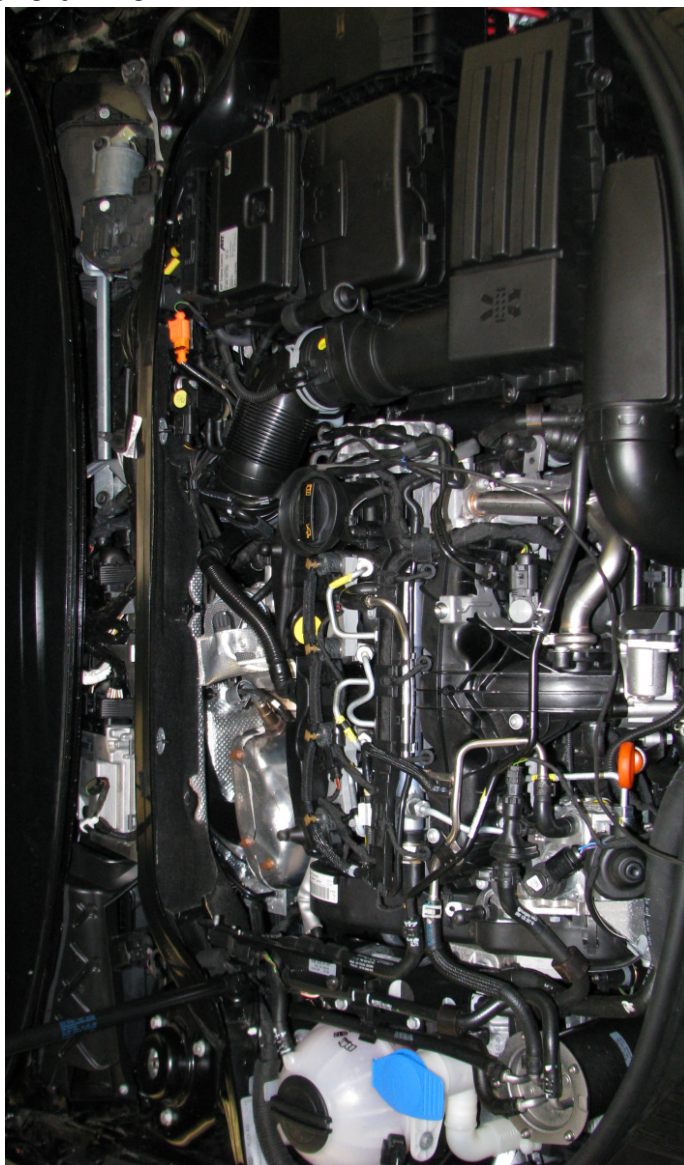
Hint:

The AEC can be left built in for manufacturer service updates.

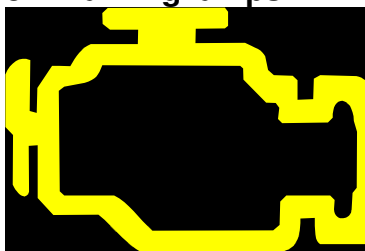
The communication with the tester is not affected by the AEC.

If the MIL-lamp and EPC-lamp respectively preheat-lamp is blinking by turns, there is an error in the ABT AEC. In this case please contact ABT Sportsline.

7. Overall view



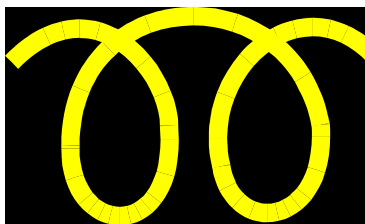
8. Warning lamps



Malfunction Indicator Lamp (MIL)



Electronic Power Control (EPC)



Control lamp "Preheat"

Assembly Instructions
ABT-AEC V2
PQ 35 & PQ 46



ABT Sportsline GmbH
Johann-Abt-Str. 2
D-87437 Kempten / Allgäu
Tel.: +49 (0)831 / 5 71 40-0
Fax: +49 (0)831 / 7 26 66
info@abt-sportsline.de
www.abt-sportsline.de